



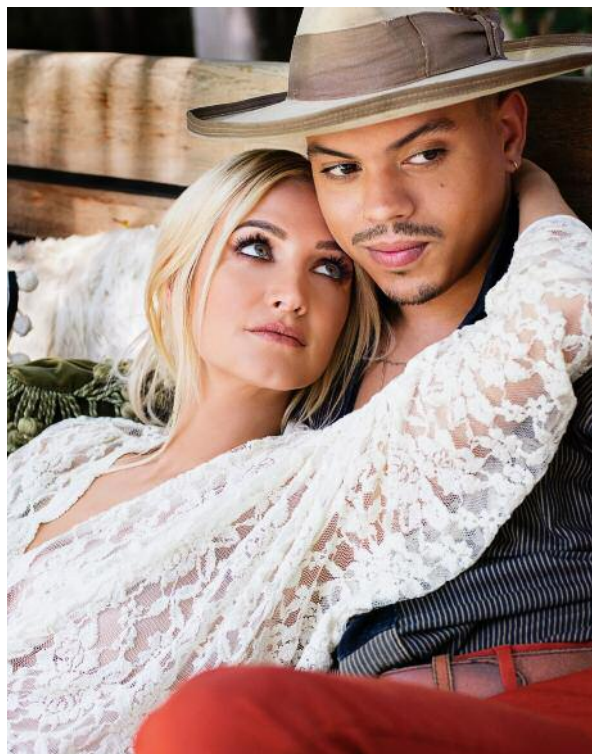
OCTOBER 2018  
**HIGHLIGHTS**



## ASHLEE+EVAN

SEASON 1 CONTINUES SUNDAYS AT 22:00 CET

The hottest new couple on television returns to E! this month with docu-series *Ashlee+Evan*. Follow married duo Ashlee Simpson and Evan Ross, son of music legend Diana Ross, as they try to balance their lives as rock stars and new parents amid the pressures of living up to their infamous family names. Prepare to have your heart won over by this adorable couple and their daughter as they open up to share their lives and their music with the world.



## MODEL SQUAD

SEASON 1 CONTINUES FRIDAYS AT 21:00 CET

The cut-throat world of high fashion continues on E! this month with the supermodel spectacular, *Model Squad*. In an age of social media, supermodels don't just walk the catwalk - they're everywhere. Staples of the New York nightlife and fashion scene, these supergirls live life large, taking a giant bite out of everything that the Big Apple has to offer. Sassy, sexy and super-famous, follow the adventures of Daniela Braga, Olivia Culpo, Hannah Ferguson, Ping Hue, Nadine Leopold, Caroline Lowe, Ashley Moore, Shanina Shaik and Devon Windsor as they prepare for the fall fashion season, when 'work hard, play hard' becomes more than a motto, it becomes a way of life.



# KEEPING UP WITH THE KARDASHIANS

SEASON 15 CONTINUES SUNDAYS AT 21:00 CET

Tune in to E! as the brand new season of *Keeping Up With the Kardashians* continues this month. With plenty of drama, glamour, laughter and tears, join America's favourite celebrity family as they meet life's triumphs and tragedies head-on in their trademark style, supporting each other through the good and the bad.

